

Parents of non-native Japanese children

Concerned about your child?

TABUNKA Kids' Coordinator

-Coordinator for children with foreign backgrounds-

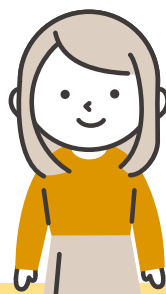
Consultation available

I'm worried about
my child's future
educational path

Learning Japanese
and doing
schoolwork is too
difficult



Consult


TABUNKA Kids' Coordinator


Schools

Japanese
lessonsGuidance from
specialists

- Consultation available for concerns about your children
- Necessary information is to be provided according to your consultation
- Schools and specialists work together to solve your problem

Contact



nihongo@mifa.jp



03-3715-4671

**Meguro International
Friendship Association(MIFA)**

 Mon. through Fri. 9:00 a.m.-5:00 p.m.
(Closed on Sat., Sun. and national holidays)

 5th floor, Meguro City Office Complex's Annex
(2-19-15 Kamimeguro, Meguro-ku, Tokyo153-0051)

MIFA After School Nihongo Club

Study

Interact

Consult

 Co-space for children and students living or
goes to school in the Meguro area

- Get support for learning Japanese, school work, preparation for high school entrance exam
- Make friends who are facing situations like you, and interact with people in your local area.
- Chat with university students who are close in age.

When Wednesdays 16:30 - 18:00
Saturdays 10:00 - 11:30

Where Online or Face to Face
(Face to face will be held at MIFA)

Contact  nihongo@mifa.jp